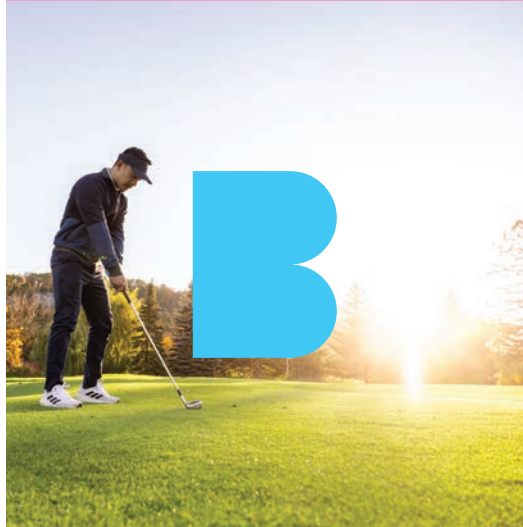




DISCOVER  
**Burlington**  
2026/27 VISITOR GUIDE





## **Welcome to a place of natural wonder *and* cultural energy.**

No matter what draws you to Burlington, bring your sense of adventure. We offer year-round experiences from hiking the escarpment and photographing lakefront cherry blossoms to savouring Canada's Largest Ribfest. All that and more.

This guide gives you the inside scoop on what to do and where to stay. So you can fill your day and clear your mind.



# Contents

Exploring Our Waterfront	6
Nature and Outdoor Activities	10
Cultural Experiences	16
Our Culinary Scene	22
Family Fun	28
Places to Stay	32
Seasonal Tips	36
Maps	38



Burlington as we know it today is rich in history and modern traditions of many First Nations and the Métis. From the Anishinaabeg to the Haudenosaunee, and the Métis, our lands spanning from Lake Ontario to the Niagara Escarpment are steeped in Indigenous history.

The territory is mutually covered by the Dish with One Spoon Wampum Belt Covenant, an agreement between the Iroquois Confederacy, the Ojibway and other allied Nations to peaceably share and care for the resources around the Great Lakes.

We acknowledge that the land on which we gather, explore, and experience Burlington is part of the Treaty Lands and Territory of the Mississaugas of the Credit.

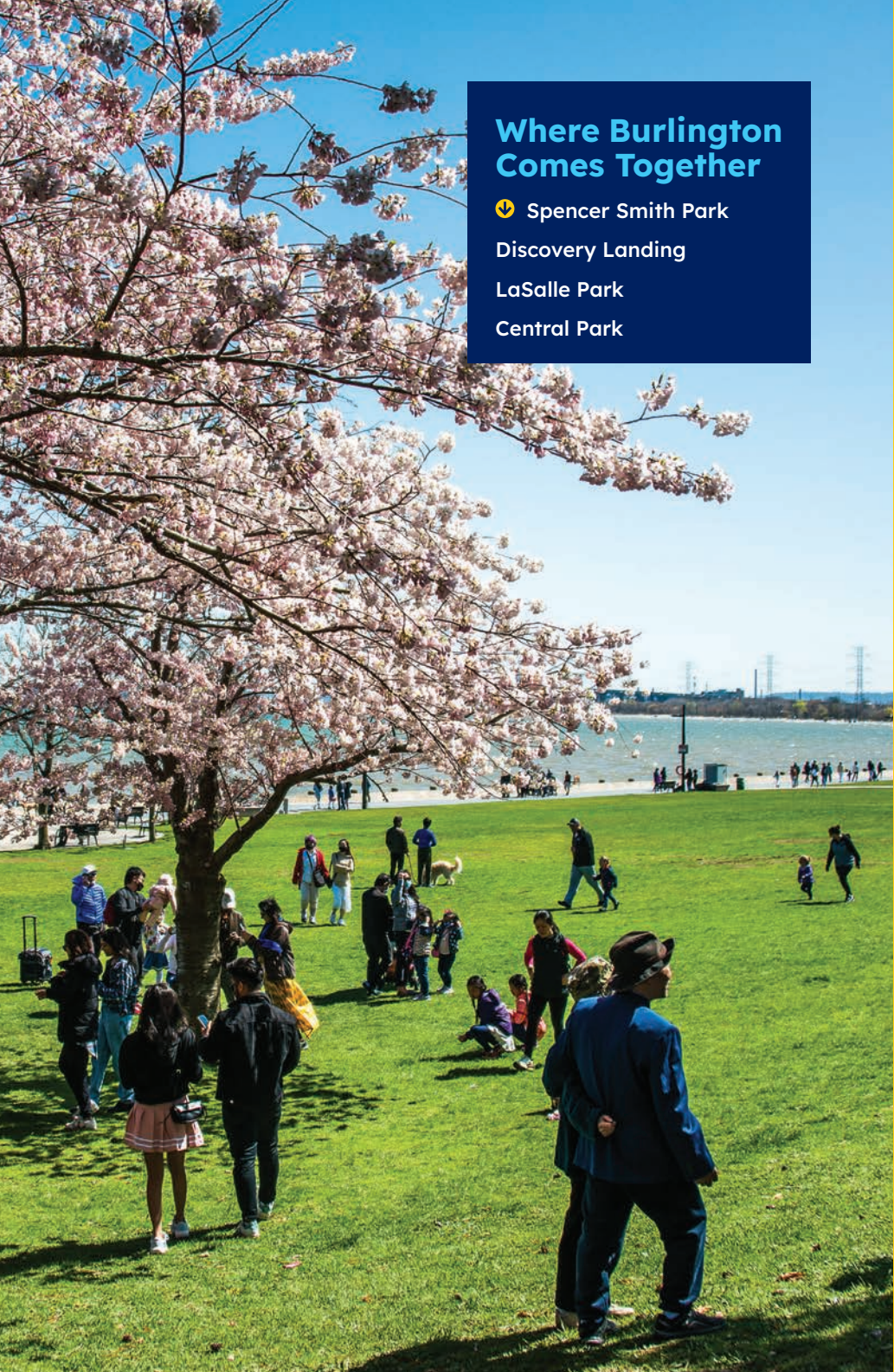


Cycling along the  
Burlington waterfront.



## Explore lakeside calm *and* downtown energy.

The waterfront is where Burlington thrives. Scenic trails, welcoming parks, vibrant patios, and sweeping lake views create space to relax and recharge, while festivals, cycling, kayaking, and year-round outdoor experiences keep the energy going from morning to night.



## Where Burlington Comes Together

- 📍 Spencer Smith Park
- Discovery Landing
- LaSalle Park
- Central Park




## Lakeside Patios

- 📍 Spencer's at the Waterfront
- Isabelle Restaurant + Lounge
- The Port House Social Bar & Kitchen
- Pepperwood Bistro

## Along the Water's Edge

- Great Lakes Waterfront Trail
- 📍 Brant Street Pier
- Beachway Park
- Burloak Waterfront Park





Stunning limestone cliffs at **Mount Nemo Conservation Area** offer adventure seekers first-rate rock climbing.

## Room to roam *and* space to unwind.

Here, nature is never far away. Escarpment trails, lakeside paths, conservation areas, and peaceful green spaces are woven into everyday life, making it easy to trade busy schedules for fresh air, open views, and a deeper connection to the outdoors.



## Royal Botanical Gardens

With more than 2,100 acres of gardens, wetlands, and nature sanctuaries, Royal Botanical Gardens has a way of making you lose track of time in the best possible way. Wander amongst thousands of blooms, spot wildlife along peaceful trails, or settle in for tea and garden views at the Tea House in Hendrie Park.

From family-friendly experiences to 19+ evening events, there are plenty of ways to explore. Every season feels a little different here, and that's part of the magic.

## Bee Beard Experience at Backed By Bees

Wearing thousands of live honeybees on your face is probably not on most people's Burlington bingo card, and that's exactly why the Bee Beard Experience at Backed By Bees is unforgettable. Suit up, stay calm, and watch as up to 20,000 bees gather into a buzzing "beard" right before your eyes.

Equal parts adrenaline rush, photo opportunity, and beekeeping lesson, this is the kind of story you'll still be telling long after the bees go home.



## Curious by Nature

Backed By Bees

Mountsberg Raptor Centre

📍 Grindstone Creek Farm

Guided Birdwatching at  
Royal Botanical Gardens



## Tee Off Beneath the Escarpment

📍 Mount Nemo Golf Club

Crosswinds Golf &  
Country Club

Burlington Golf &  
Country Club

Tyandaga Golf Course



## Where Time Slows Down

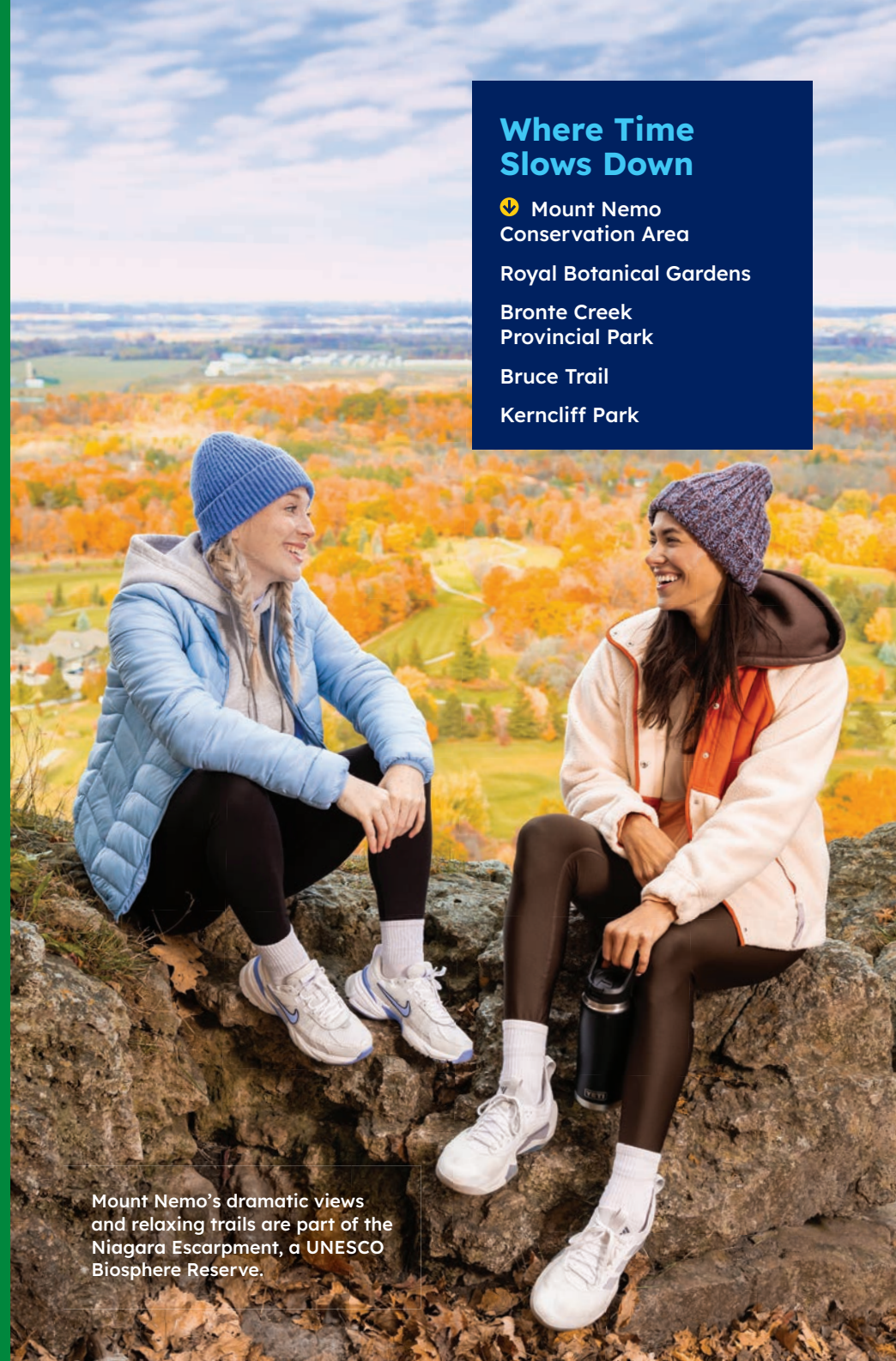
📍 Mount Nemo  
Conservation Area

Royal Botanical Gardens


Bronte Creek  
Provincial Park

Bruce Trail

Kerncliff Park



Mount Nemo's dramatic views and relaxing trails are part of the Niagara Escarpment, a UNESCO Biosphere Reserve.

A woman with long dark hair, wearing a blue denim jacket and a bright orange scarf, is pointing towards a glass display case. She is surrounded by three children: a girl in a denim jacket to her left, a younger girl in a denim jacket in front of her, and a boy in a dark jacket to her right. They are all looking intently at the display. The setting is an art gallery with a wooden ceiling and other art pieces visible in the background.

Explore the Art Gallery of Burlington.

## Celebrate cultural vibes *and* community ties.

Creativity and community are part of Burlington's everyday rhythm. Live performances, waterfront festivals, public art, local storytelling, and shared experiences bring people together and create moments that feel vibrant, welcoming, and uniquely Burlington.



## Experience our Festive Spirit Year Round

**Burlington Waterfront Sculpture Trail (April-May)**

**Why Not Wine Festival (May)**

**Lakeshore Music & Arts Festival (June)**

**Burlington Latino Festival (June)**

**Canada Day Celebration (July)**

**Burlington Waterfront Festival (July)**

**Lakeside à la Carte (August)**

**Burlington VegFest (August)**

**Canada's Largest Ribfest (Labour Day Weekend)**

**Appleby Line Street Festival (September)**

**The Great Pumpkin Trail (October)**

**Burlington Festival of Lights (Nov-Jan)**

**Winter Wonders (Nov-Jan)**

### Looking For More Info?

Dates, details, lineups and new events are always popping up. Visit [DiscoverBurlington.ca](http://DiscoverBurlington.ca) to learn more about these festivals and find even more ways to fill your calendar in Burlington.





## The Show Starts Here

📍 Burlington Performing Arts Centre

Drury Lane Theatrical Productions



## Take It Home

📍 AGB Studios

Shop Time Studios

Pottery N Paint Cafe

## Stories That Stay With You

📍 Joseph Brant Museum

Ireland House Museum

Art Gallery of Burlington



## Bimose Agaming: Walking along the Lake

Enjoy a spirited art walk throughout Spencer Smith Park, featuring the work of First Nations, Métis and Inuit artists.

The Famous 'Spencer's Tower' from  
**Spencer's at the Waterfront** in  
Downtown Burlington.

Photo by Rick O'Brien

## Discover local flavours *and* rich stories.

Come hungry. Stay awhile. Burlington's culinary scene is built around good food, good conversation, and the kinds of places you'll want to come back to again. Waterfront patios, neighbourhood cafés, late-night cocktails, and globally inspired restaurants all play a part in the city's vibrant food culture.



## Intimate Group Dining

📍 Spencer's at the Waterfront

Table 10

The Bistro at Courtyard by Marriott Burlington

Lowville Bistro

400 Brant



## Worth Slowing Down For

📍 Di Mario's Trattoria

Son of a Peach Pizzeria

Lord Nelson Steak House

Loondocks

## Your New Favourite Café

Tamp Coffee Co.

📍 Peach Coffee Co.

Saving Thyme Patisserie & Bistro

Firebat Coffee Roasters



## Flavours to Explore

The Express Restaurant

El Inka Peruvian Cuisine

The Mule

👉 Pepe and Lela's Eatery

Familia Fine Foods



## After Dark

Martini House

👉 Isabelle Restaurant + Lounge

District Kitchen + Bar

Buvette Restaurant & Wine Bar

radius®

## Patio Season Lives Here

👉 Nickel Brook Brewing Co.

Paradiso

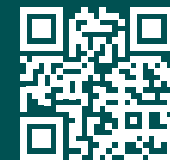
Jacksons Landing


Squires Gastro Pub



Taste of Burlington is our city's signature winter culinary event, celebrating the creativity and talent of Burlington's chefs with two weeks of specially curated prix-fixe menus.

📷 @tasteofburl  
📍 Taste of Burlington



A woman and a child are joyfully throwing autumn leaves into the air. The woman, on the left, is wearing a maroon jacket and a black scarf. The child, on the right, is wearing a pink long-sleeved shirt and a white puffer vest. They are standing by a pond with a stone ledge. The background is filled with trees with vibrant yellow and orange autumn foliage under a blue sky with scattered clouds. The scene is captured in a circular frame that overlaps with an orange circle containing text.

## Escape the rush *and* embrace the fun.

The best trips are the ones kids never stop talking about. Splash pads, hands-on adventures, sweet treats, outdoor exploring, and playful discoveries around every corner make Burlington an easy place to spend quality time together.



## Explore Together

- 📍 Royal Botanical Gardens
- Hutchinson Farm
- Bronte Creek Children's Playbarn
- Mountsberg Raptor Centre



## Burn Off Some Energy

- 📍 Activate Burlington
- Lil' Monkeys Indoor Playground
- Bubble Force
- Splitsville Bowl Burlington
- Zero Latency Burlington

## Fun for Everyone

- 📍 Spencer Smith Park Splash Pad
- GameTime Social
- La Crème de la Crème Creamery
- Easterbrook's Hotdog Stand
- The Sunshine Doughnut Co.



## Places that leave you relaxed *and* recharged.

Some places are easy to visit. Burlington is easy to settle into. Slow mornings by the water, walkable evenings downtown, and the comfort of staying close to everything make it simple to turn a day trip into a weekend worth lingering over.





## Wake Up by the Water

📍 The Pearle Hotel & Spa

Waterfront Hotel  
Downtown Burlington



## Easy Weekend Escapes

Best Western Plus  
Burlington Inn & Suites

📍 Courtyard by Marriott  
Burlington

Homewood Suites by Hilton  
Burlington

## Family-Friendly Comfort

Hampton Inn & Suites  
Burlington

Holiday Inn Hotel and  
Candlewood Suites

📍 Quality Hotel Burlington



# Seasonal tips

Burlington is a year-round destination where each season brings its own distinct rhythm, from sun-drenched summer days along Lake Ontario to the fiery foliage of autumn across the Niagara Escarpment. Whether it's winter walks along the waterfront, spring blooms in the city's gardens, Burlington offers an ever-changing backdrop that makes it just as inviting in January as it is in July.

## Summer

Spend an afternoon along the lake at Spencer Smith Park or explore Burlington's trail network and escarpment access points. Visit the gardens and trails at the RBG or take advantage of the city's free summer programming, including Concerts in the Park, Movies Under the Stars and outdoor swimming at parks and recreation spaces.



## Fall

Fall in Burlington is one of the most scenic times of year, with the Niagara Escarpment and lakeside parks turning into a rich tapestry of reds, oranges, and golds. Hike Mount Nemo or Kerncliff Park for the best views, or try pumpkin or apple picking at a nearby farm.



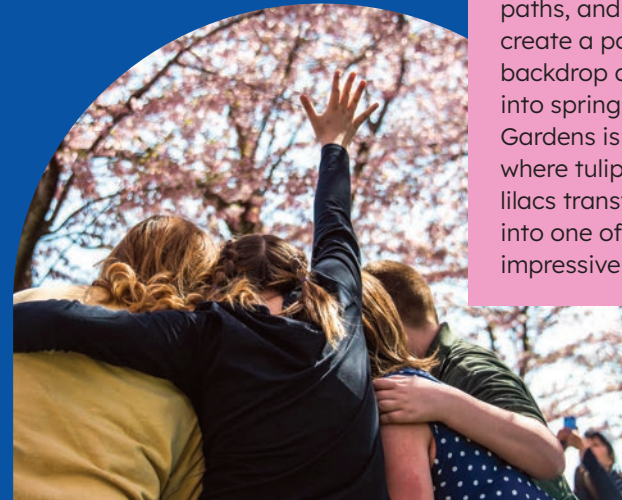
## Winter

Skating at Spencer Smith Park's Rotary Centennial Pond is a favourite amongst locals, while hiking and cross-country skiing north of the city awaits those looking for something more active. Warm up after at one of our many cafés, restaurants or indoor cultural spaces.



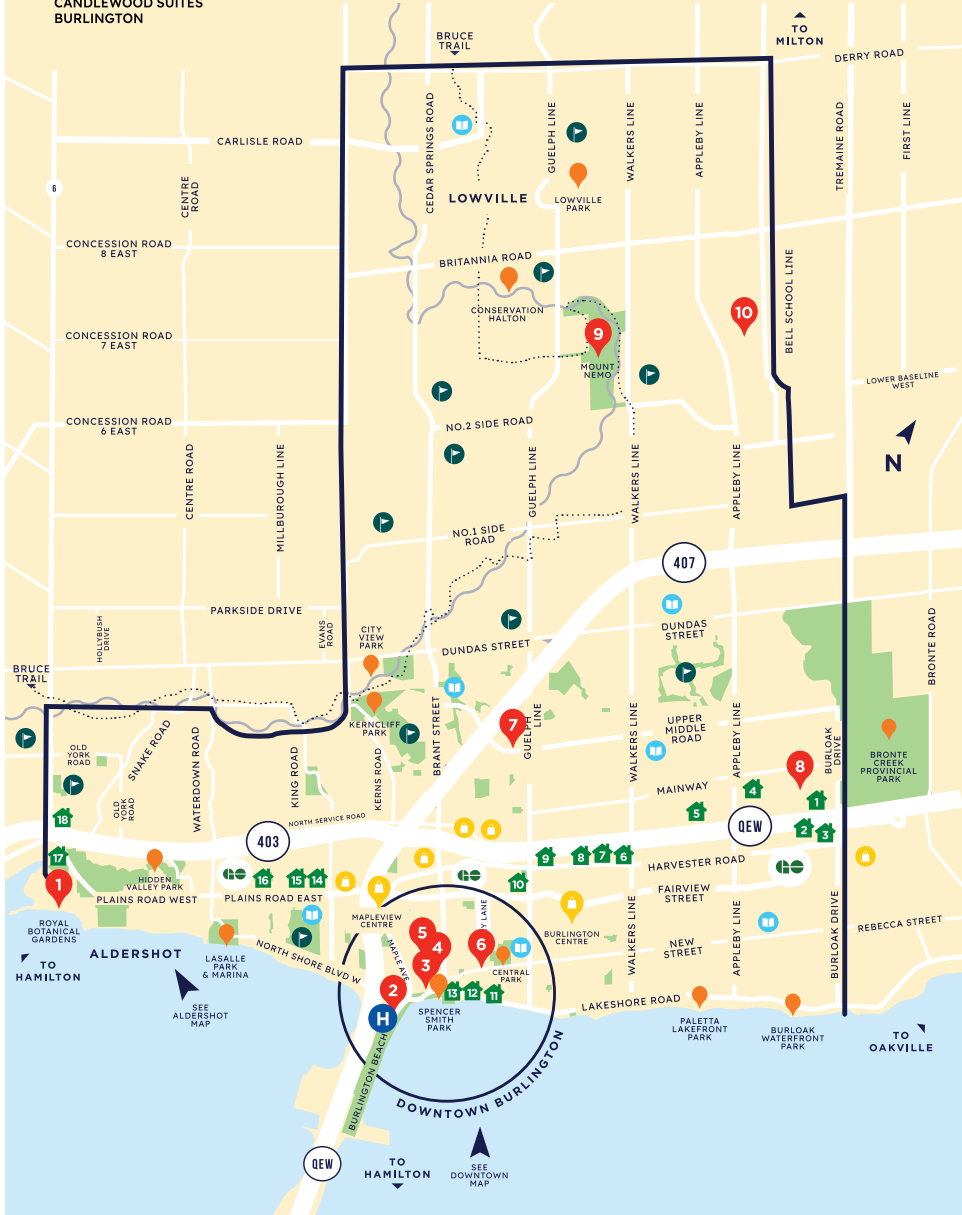
## Spring

Head to Spencer Smith Park, where lakeside walks, cycling paths, and cherry blossoms create a postcard-worthy backdrop as Lake Ontario thaws into spring. The Royal Botanical Gardens is another highlight, where tulips, magnolias, and lilacs transform the landscape into one of Canada's most impressive spring floral displays.



## ACCOMMODATIONS

- |  |                           |                                     |                   |
|--|---------------------------|-------------------------------------|-------------------|
| 1 COURTYARD BY MARRIOTT                              | 10 BEST WESTERN HOTEL     | 9 ROYAL BOTANICAL GARDENS           | 📍 PARK            |
| 2 HILTON GARDEN INN                                  | 11 MARQUIS LAKESIDE INN   | 9 JOSEPH BRANT MUSEUM               | 🏠 HOTEL           |
| 3 HOMEWOOD SUITES BY HILTON                          | 12 THE PEARLE HOTEL & SPA | 9 ART GALLERY OF BURLINGTON         | 🏥 HOSPITAL        |
| 4 HAMPTON INN & SUITES BURLINGTON                    | 13 WATERFRONT HOTEL       | 9 VISITOR CENTRE                    | 🛒 SHOPPING CENTRE |
| 5 MOTEL 6  | 14 KNIGHTS INN BURLINGTON | 9 BURLINGTON PERFORMING ARTS CENTRE | 📖 LIBRARY         |
| 6 QUALITY HOTEL BURLINGTON                           | 15 CRESTWOOD MOTEL        | 9 PUBLIC LIBRARY                    | 🏌️ GOLF COURSE    |
| 7 ADMIRAL INN  | 16 ROYAL INN              | 9 IRELAND HOUSE MUSEUM              |                   |
| 8 COMFORT INN  | 17 ESQUIRE MOTEL          | 9 BURLINGTON CONVENTION CENTRE      |                   |
| 9 HOLIDAY INN HOTEL AND CANDLEWOOD SUITES BURLINGTON | 18 CITYVIEW MOTEL         | 9 MOUNT NEMO                        |                   |
|  |                           | 9 BURLINGTON EXECUTIVE AIR PARK     |                   |



- |            |                           |
|------------|---------------------------|
| 📍 PARK     | 1 ROYAL BOTANICAL GARDENS |
| 🅑 PARKING  | 2 ALDERSHOT GO STATION    |
| 🏥 HOSPITAL | 3 ALDERSHOT BIA           |
| 🏠 HOTEL    |                           |



**Burlington is easy to discover, and we're here to help you experience it.**



414 Locust St. Burlington, ON L7S 1T7  
Instagram: @DiscoverBurlington  
Facebook: Discover Burlington  
[discoverburlington.ca](http://discoverburlington.ca)